

Entrance to more than 21,000 acres of potential recreation and relaxation.

# MORGAN-MONROE STATE FOREST

**M**ORGAN-MONROE STATE FOREST, just 46 miles due south of Indianapolis, and straddling the Morgan and Monroe county line, offers much to the outdoor lover. Located on *old* Ind. 37 south of Martinsville (with an entrance also on *new* Ind. 37), its many trails, firelanes, lakes and other features are easily accessible.

Morgan-Monroe forest, like other state forests, is being looked upon as a new source of recreation for the thousands of outdoor-loving Hoosiers. Located but a short distance from the heavily populated Indianapolis area and other thickly populated areas, the forest is a mecca for youth groups, boy scout troops, and hiking

enthusiasts. Besides those groups, individuals are finding the thrill of being out-of-doors and enjoying nature.

#### **LAND RECLAIMED.**

The forest, containing 21,435 acres, has been built on land which was badly eroded and worn-out from poor farm practices. Several acres had been heavily cut-over timber tracts. Purchasing of the land began in 1930 and is continuing as more land is abandoned. The feature of the forest is timber experimental plots and land use demonstration projects. So well has the forest been managed that now the timber value (of trees over 11 inches in diameter) is estimated at \$780,000. Timber is cut for state use and for the sale of posts and poles. There are more than 1,000 acres of pine plantations. Pine plantings continue with each new acquisition of land.

In the past, this forest, like the others, has been considered only as a tree growing project. But it is reasoned now that while a forest is primarily for the growing of trees, which maintain the water table and help control erosion, there could be additional uses for forest land. Now, forests are used for hunting, and

facilities are being added to provide camping, picnicking, hiking, and other outdoor recreations.

The recreation program, getting a slow start, has been accelerated the last two years. Morgan-Monroe forest can now boast of five miles of asphalt roads, 15 miles of good gravel roads, and several miles of fire lanes and trails throughout the forest. There is hardly any section that cannot be reached by one or more of these roads. The forest also contains three lakes which have been stocked with fish to offer the angler an opportunity to try his skill, or just wait lazily for the fish to take the initiative.

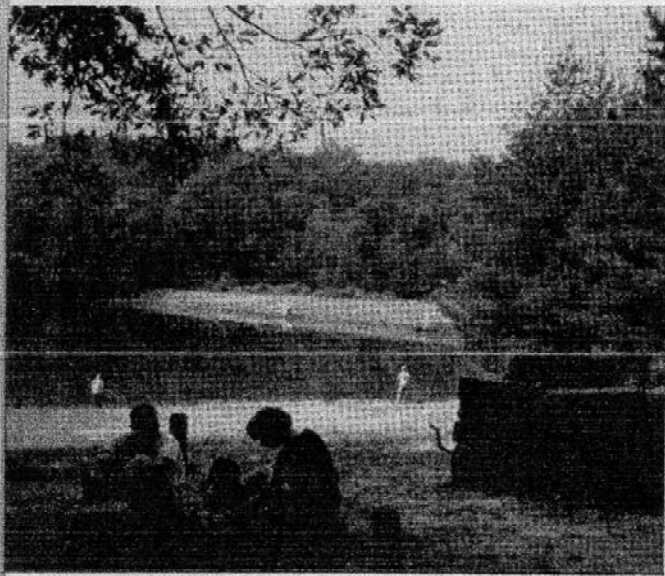
There are three camp grounds, five main picnic areas and numerous roadside picnic areas, and five playground areas. In case of inclement weather, there are five shelter houses, and three cottages are available for group camping.

#### **LATEST ADDITIONS.**

Improvements added in 1958 have made the forest even more attractive to campers and hikers. Three shelters have been reconditioned for overnite sleeping, additional sanitary facilities have been added, and two new camping and picnic areas have been provided.

**Shelter house and cooking facilities nestling on a wooded slope.**





**Outdoor recreation provides one of the few opportunities for the entire family to get together in a co-operative venture.**

Each of our state forests has something unique to offer for recreation. Very popular with scouts, hiking clubs, and individual enthusiasts, are

the two hiking trails, Yellowwood Trail and Tulip Tree Trace. The latter is used by Boy Scouts and is known as "their" trail. Both trails traverse more than 20 miles.

Yellowwood Trail is sponsored by the Youth Hostel group. It begins at Wall Shelter on Mason Ridge road and ends at Bear Wallow Hill near Brown county state park. Tulip Tree Trace also begins at Wall Shelter and runs to the lakeside camping area at Yellowwood state forest in Brown county. So popular are these trails, that it is not uncommon to see as many as 80 hikers start out at 4 A.M. to walk these trails in their entirety. Boy Scout troops use the Tulip Tree Trace as part of their scouting program.

Take a day or week-end off and visit Morgan - Monroe state forest. Consorting with nature can be an unforgettable experience. ●

**"Wash rack" suitable for mass cleanings of Scouts or other large camping groups.**

